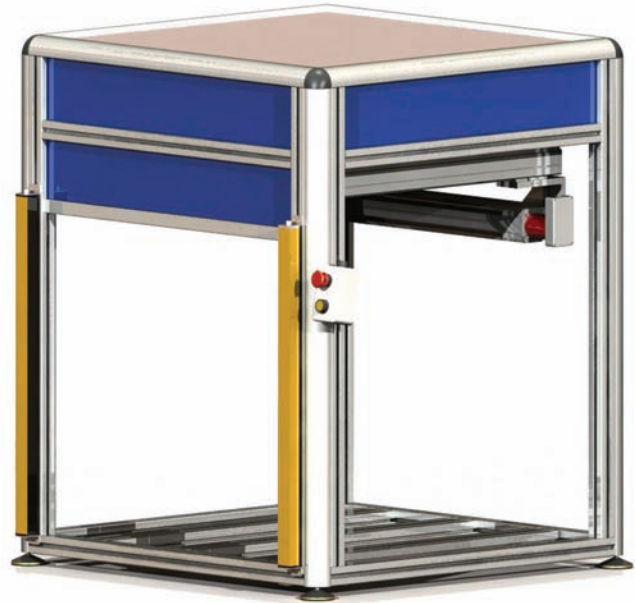


KEY FEATURES

- 3-axis screw ball axis moving system
- 520 x 520 x 150mm working area
- 5kg tool payload
- Optional fourth axis implementation
- Closed Loop architecture
- PC compatible programming software
- 6µm resolution
- CE optical safety barrier included



The TL5050, whose features include extreme flexibility, absolute precision and enhanced operation repeatability, is the ultimate expression of robot technology applicable in the most diverse production contexts. The TL5050 operates based on a three-axis cartesian system and can be upgraded to four axes upon request.

The travelift axis configuration, with independent working area, makes "on-line" usage possible, other than the classic separate, off-line working arrangement.

Thanks to the provided powerful, proprietary PC compatible software, it is possible to store up to 255 machining phases, so called from now on programs. Every program consists in a sequence of movements on 3 or 4 axis, eventually dependent from inputs state, as well as in an on-board I/O activation sequence. The intuitive graphic interface helps the user to manage extremely complex operations in a quick and efficient way. To make programming even easier, specific machining masks have been developed to create points, lines, areas, arcs and circles as well as conditional and relative lines.

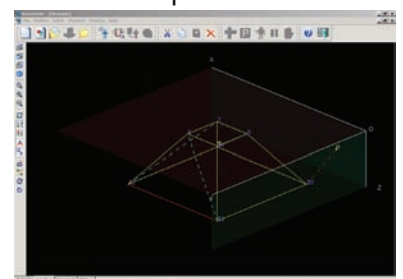
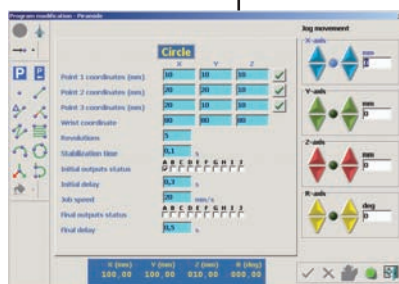
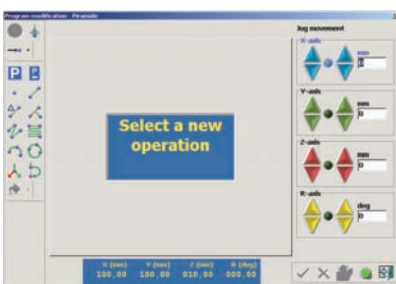
It is possible to import dxf format files generated via the majority of today's CAD software.

The machine is supplied with a PDA to control the main operating functions in the stand-alone mode.

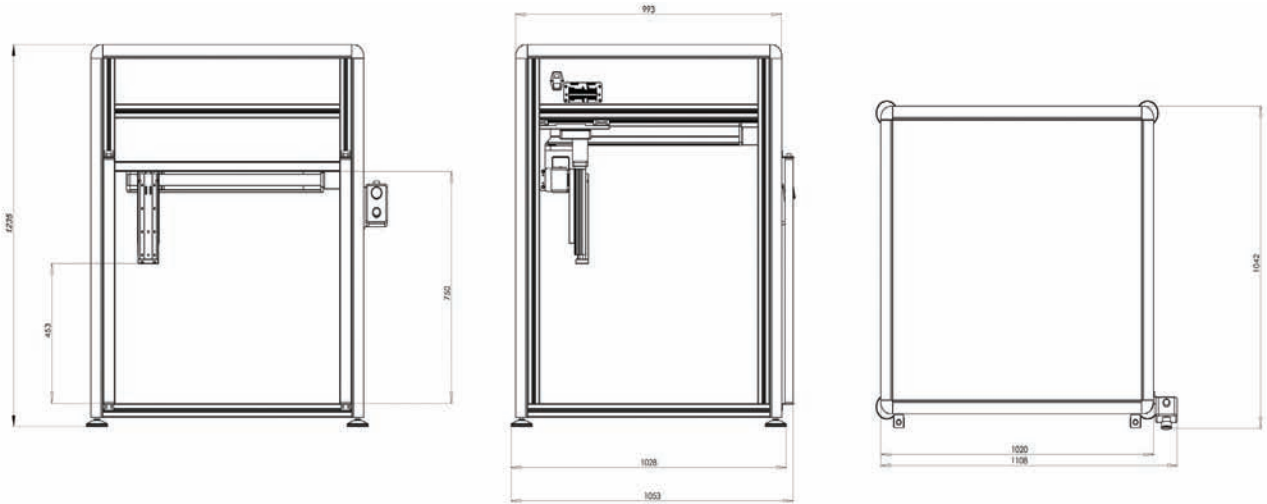
Main Applications

- Dispensing
- Coating
- Screwing
- Milling and Drilling
- Welding
- Pick and Place

Graphic Editor



DESKTOP ROBOTS - TL



TECHNICAL SPECIFICATIONS

<b>AXIS MOVING SYSTEMS</b>	Full 3 screw ball axis system
<b>OPERATING AXES</b>	X-axis 520 mm, Y-axis 520 mm, Z-axis 150 mm,
<b>REPEATABILITY</b>	±0,02 mm
<b>MINIMUM RESOLUTION</b>	6 µm
<b>TRANSPORTABLE LOAD</b>	5 Kg
<b>PTP SPEED</b>	1-600 mm/sec X, Y, Z; 1-2500 degrees/sec R
<b>INTERPOLATION</b>	3D linear and circular on X, Y, Z, Circular Point on wrist
<b>AVAILABLE I/O</b>	16 inputs -16 outputs
<b>PROGRAMMING</b>	- Remote mode (self-learning) through PC software, joystick and/or PDA - Profiles importable from dxf files - Manual mode
<b>GEOMETRIC MOVEMENTS</b>	Points, lines, areas, arcs, circle, conditional and relative lines
<b>ON-BOARD MEMORY</b>	100,000 points; 255 programs
<b>POWER SUPPLY</b>	110/230 Vac ±10% - 50/60Hz - 400VA
<b>DIMENSIONS (length-width-height)</b>	1020 mm - 993 mm - 1200 mm
<b>WEIGHT</b>	70 Kg

---



---



---



---



---



---



Via dell'Industria 20  
42025 - Cavriago - Italy

tel. +39 0522 494404  
fax. +39 0522 494410

info@aeb-robotics.com  
www.aeb.robotics.com